

# eG100i

Generator Output: 7.5kVA

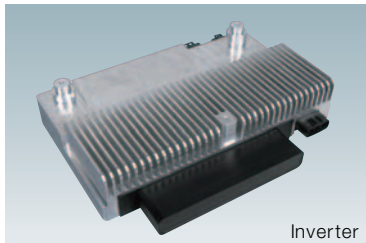
**Inverter**



# The First Inverter-type Power Generator in this Class

## High Quality Power Supply

The inverter system and CVCF control ensure power supply comparable to any commercial power source.



Inverter

## High Output

Output at 50Hz has been increased by 20% to ensure equal output at both 50Hz and 60Hz.

## Lightweight Compact Design

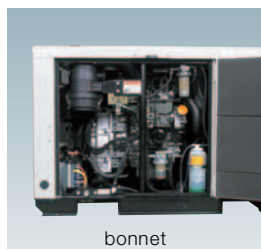
Our compact vertical water-cooled diesel engine and inverter-type power generator enable us to create a lightweight compact design with great portability.

## Low Noise Level

Our energy-saving system that constantly keeps engine rotation to the minimum necessary, coupled with noise reducing muffler and optimally matched acoustic absorbent materials, make this generator up to 10dB(A) quieter than previous models.

## Energy-saving Operation

In addition our energy-saving system that optimizes engine rotation makes this model up to 40% more fuel efficient than previous models.



bonnet



Control panel : eG100 i

## SPECIFICATIONS

Model			eG100i	
Frequency			Hz	50 / 60
GENERATOR	Output	Stand-by power rating	kVA	7.5
			kW	7.5
	Prime power rating	kVA	7.0	
		kW	7.0	
Voltage			V	110 / 120 / 220 / 230 / 240
Current (Prime)			A	31.8
Phase and wire				Single Phase, 2 wire
Power factor			%	100
Insulation class				Class B
No. of poles				Multipole
Excitation				PMG type
Inverter	Control system			CVCF (Voltage & frequency control system)
	Voltage wave			Sine wave
Engine	Type			2TNV70-ASG
	No. of cycles-bore x stroke		mm	2-70 x 74
	Displacement		lit.	0.570
	Continuous rating output		kW/min <sup>-1</sup> (rpm)	8.5 / 3600
	Rated output		kW/min <sup>-1</sup> (rpm)	9.3 / 3600
	Revolutions		min <sup>-1</sup> (rpm)	2300 ~ 3400
	Combustion system			Indirect injection(IDI)
	Cooling system			Radiator
	Aspiration			Natural Aspiration
	Lubricating system			Forced lubrication by trochoid pump
	Starting system			Electric starting
	Fuel			Diesel fuel(BS2869A1 or equivalent)
	Lubricant			SAE 10W-30, API class : CD or higher
	Unit	Cooling water qty	Engine	lit.
Radiator			lit.	1.6
Lubricant qty		Total	lit.	2.2
		Effective	lit.	1
Starting motor		V-kW	12 - 1.0	
Charging dynamo		V-A	12 - 40	
Battery(5HR)		V-AH	12 - 36(55B24L)	
Fuel consumption	25% load	lit. / hr	1.1	
		lit. / hr	1.6	
		lit. / hr	2.2	
		lit. / hr	3.0	
Noise level (7m)	25% load	dB(A)	63.5	
		dB(A)	65.5	
		dB(A)	67.5	
Fuel tank capacity		lit.	32	
Dimension	length	mm	1080	
	width	mm	647	
	height	mm	686	
Dry weight		kg	257	

Note : All data subject to alteration without notice.

## YANMAR CO.,LTD.

1-32, Chayamachi, Kita-ku, Osaka 530-8311, Japan  
 Telephone:+81-6-6376-6411 Facsimile:+81-6-6377-1243  
 www.yanmar.co.jp